



1Touch® Evo3

The 1Touch® biometric locks have evolved into a product line known for their superior fingerprint scanner technology and quality. 1Touch® evo3's cutting edge security is accentuated by unique features and an attractive design. The fingerprint scanner and pin pad is discreetly hidden under a slide cover for protection against harsh weather conditions making the lock perfect for exterior, as well as interior, use. Unlocking the door using the scanner or pin-pad is fast and reliable. Because your time is valuable the simple "DIY" installation takes less than 10 minutes. The 1Touch evo3 was specifically engineered to seamlessly fit into nearly any US standard door preparation. If the lock needs to be moved to a different door, there is not a problem. The 1Touch evo3 comes with reversible handle that flip direction without the needs of any tools.

Three ways to gain access

Opening the door to your home or storage space has never been easier. You can enroll yourself, family, and friends in a few seconds. Enrolled users can be granted door access using a fingerprint, 8 digit pin code, or one of the high security dimple keys that are provided with the lock.

Locking up has never been so easy

The 1Touch makes locking up effortless.

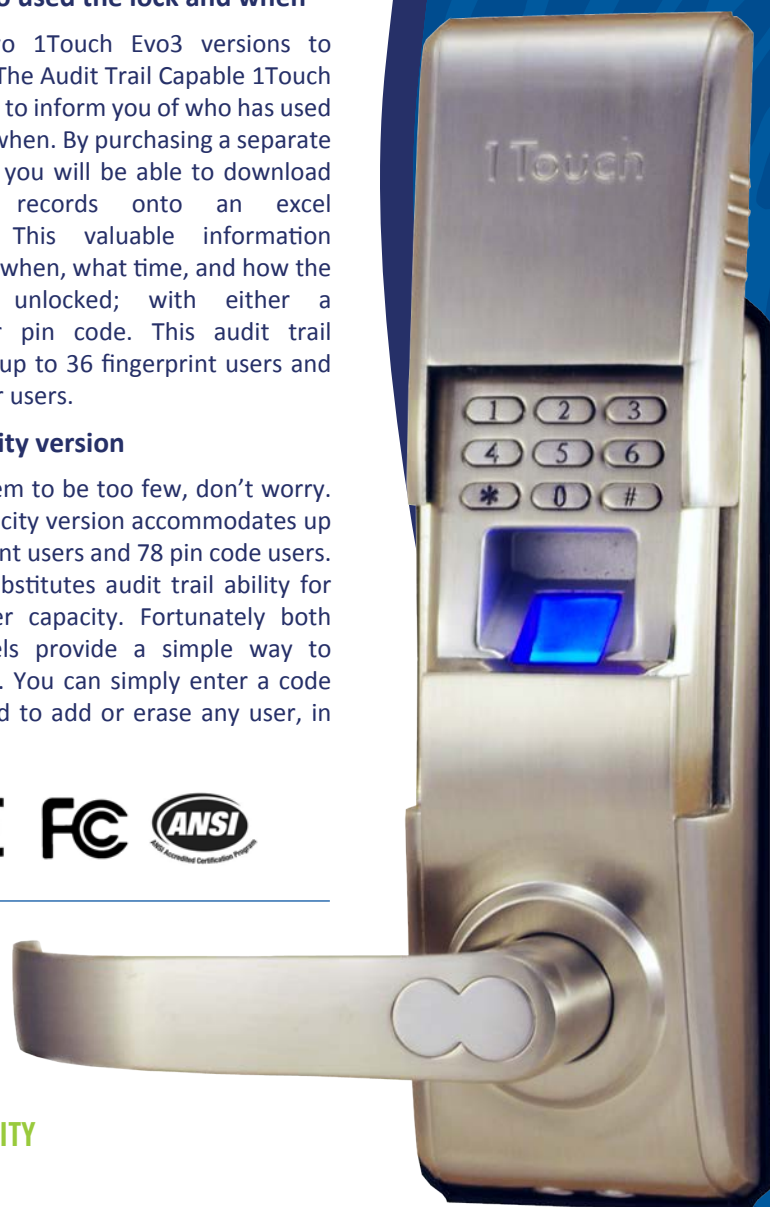
When the door is closed it automatically locks behinds you. No need to use a key or pincode to relock the device. The door is always locked and secure.

Knowing who used the lock and when

You have two 1Touch Evo3 versions to choose from. The Audit Trail Capable 1Touch has the option to inform you of who has used the door and when. By purchasing a separate audit trail kit, you will be able to download the access records onto an excel spreadsheet. This valuable information includes who, when, what time, and how the device was unlocked; with either a fingerprint or pin code. This audit trail version holds up to 36 fingerprint users and 78 pin number users.

A high capacity version

If 36 users seem to be too few, don't worry. The High Capacity version accommodates up to 75 fingerprint users and 78 pin code users. This model substitutes audit trail ability for enhanced user capacity. Fortunately both 1Touch models provide a simple way to manage users. You can simply enter a code on the pin pad to add or erase any user, in seconds.



REVERSIBLE HANDLE

NO ADDITIONAL HOLES TO DRILL

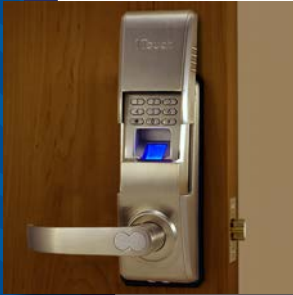
3 WAYS TO OPEN: FINGER, CODE, & KEY

INDOOR/OUTDOOR ANSI GRADE 2 QUALITY

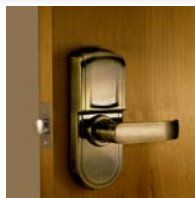
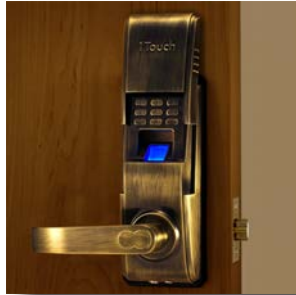
1Touch® Evo3

Available Finishes

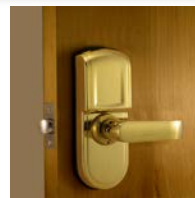
Brushed Nickel



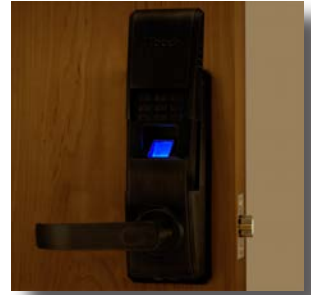
Antique Brass



Polished Brass



Aged Bronze



1Touch® Evo3 FEATURES

- New! - ADA Compliant Reversible Handle
- "Bump Resistant" High Security Dimple Keys
- Install your 1Touch® Evo3 in 10 minutes - no drilling needed!
- Fits a USA standard 2-1/8" diameter hole with a thickness of 1 3/8" - 2 1/4"
- Add / delete individual users directly on the lock (no PC required)
- 36 fingerprint user capacity (75 for High Capacity model) – 78 pin number users
- Fingerprint, Pin Code, or Key Mechanical Key Override
- ALL weather design - Operating Temp: -4 ° to 140 ° F
- 4 AA battery with approximately 15,000 uses before replacement
- Sliding weather cover triggers sensor to power on automatically
- Fingerprints will not be lost if batteries fail (non-volatile memory)
- Low battery warning alerton
- Includes both : 2 3/8 or 2 3/4 inch backsets (ANSI grade)
- Optional audit trail kit on 36 user model

* - Installation time is based on an approximation of a typical installation on a standard preparation door. Actual installation time will vary. All features and specifications are subject to change without notice.

SPECIFICATIONS

Unlocking Methods	Fingerprint, Pin Codes and Manual Key Override
False Acceptance Rate	<0.0001%
Fingerprint User Capacity	36 Standard Model* 75 High Capacity Model*
Password Capacity	78 Max (less registered fingerprint users)
Password Length	8 Digits
Door Thickness	1 3/8" to 2 1/4"
Scanner Type	Optical CMOS
Resolution	560 DPI
Verification Type	1:N
Scanning Time	< 1 Second
Anti static Voltage	>15000v
Working Temperature	-4°F / 140°F
Power Supply	4 AA
Number of Keys	4

* - 1Touch® Evo3's are available in a 36 user capacity model with audit trail capability support and a 75 user high capacity model **without** audit trail support. The model must be selected at time of purchase and cannot be converted to a different model. Specifications are subject to change without notice.