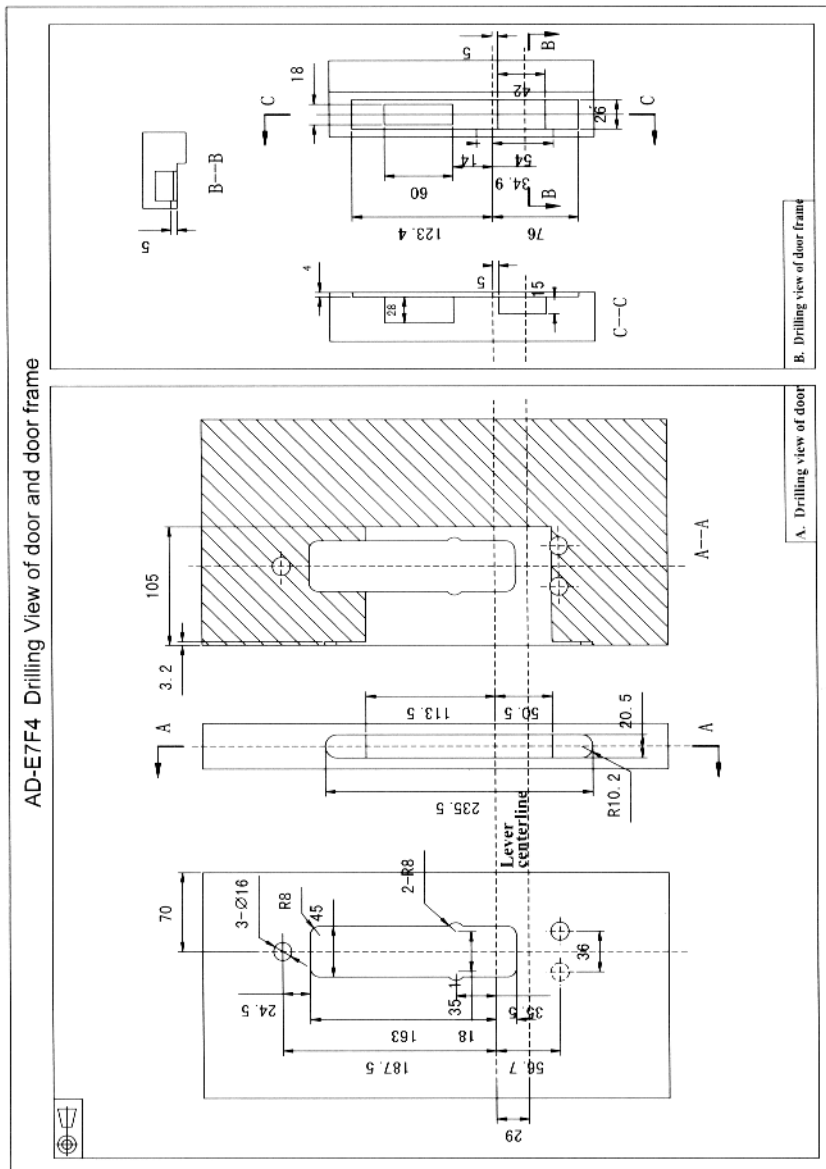


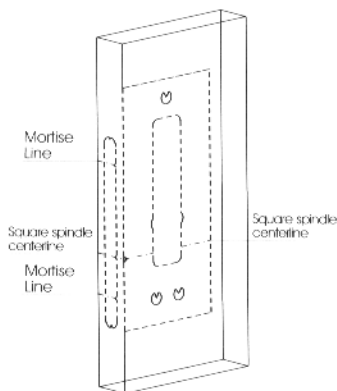
3.3 Installation template

Unit: mm

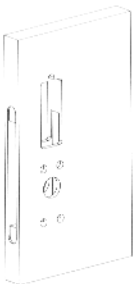


3.4 Installation steps

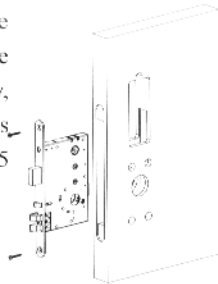
1. Draw lever centerline as your request, the recommended height is 1 meter above the ground. Mark the door for drilling holes with a pencil according to installation template provided.



2. Drill the door from both sides with electric drill. Cut out the cavity for mortise as per drilling view in the manual.



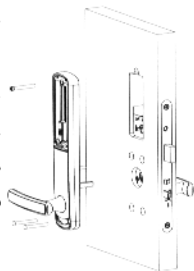
3. Put the mortise into the mortise cavity, fix it with 2 pcs of M4 * 25 screws.



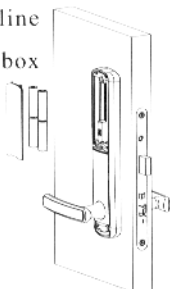
4. Fix front plate on the door, make the spindle on the front plate through the cylinder.



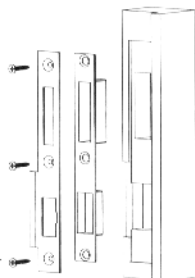
5. Connect the data cable in front plate with back plate, fix the back plate with 2 pcs of M5 screws and 1pc of M6 screw.



6. Put 4 AA alkaline batteries in battery box as instructed.



7. Mark the door frame for drilling holes as per drilling view. Cut out the cavity for strike and strike plate. Put strike into the cavity, covered with strike plate, fix them on the door frame with 3 pcs of M4*25 screws.



8. Test the lock as per operation instructions.

9. Cover the back screw hole with plastic screw cover provided.



10. Installation completed.

